



Getinge La Calhène
 1 rue du Comté de Donegal
 F-41102 Vendôme cedex, France
 Phone: +33 (0) 254 734 747
 marketing-contact.glc@getinge.com
 www.lacalhe.com

LaCalhene is an equipment manufacturer specialized in material to protect human beings in a hostile environment, protect a product against the surrounding environment, and protect the environment from hazardous products. Its customer base is half in the nuclear field and half in the pharmaceutical field.

In the nuclear sector LaCalhene supplies 4 product lines: remote manipulators, transfer systems (the DPTE® range, standard and special applications), Glove Box ports, and shielded casks for transfer / transport. LaCalhene supplies to 5 market segments: nuclear fuel manufacture, spent fuel recycling, radiopharmacy, laboratory / universities / units of research, and dismantling / decommissioning / sanitization.

On the basis of its long experience in the nuclear sector, Getinge La Calhène developed a set of solutions and equipment for the pharmaceutical industry, in particular for isolators and sterile transfer systems (DPTE® and DPTE-BetaBag®).

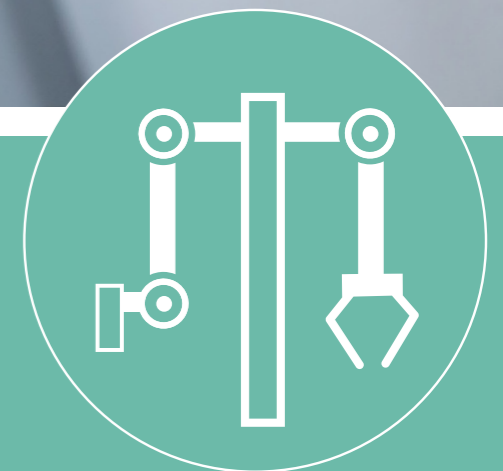
LaCalhene is an active member of:



Getinge La Calhène - Remote Manipulator Tongs - EN - FP-418 - 002 - Jan 2021 - © photos: Getinge La Calhène - Creation www.thinkadcom.com
 Non contractuel/Document - Getinge La Calhène reserves the right to modify the products described in this document without notice.

Remote Manipulator Tongs

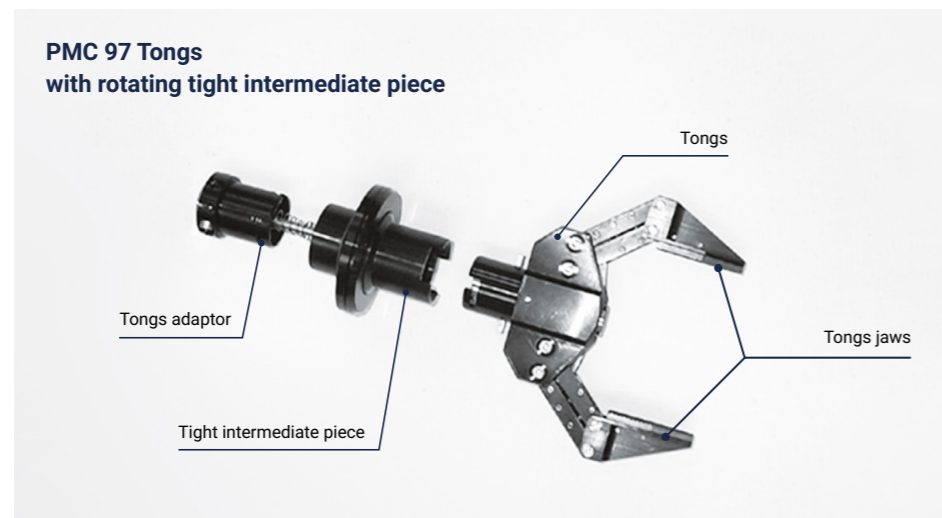
A range of tongs systems
 for all types of manipulation



LaCalhene tongs : agility, force and precision in any situation

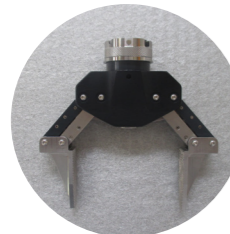
In combination with its remote manipulators range, LaCalhene offers a variety of tongs, adapted to your needs.

With a choice of material and a disconnectable grippers option, our tongs are suitable for all types of work in hot cells.



LaCalhene range

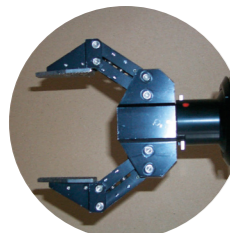
PGCL 2 : powerful and resistant



Tongs adaptor available in $\varnothing 20$ or $\varnothing 19,05$

- MA 11-80*
- MT 120
- MT 200
- Terman

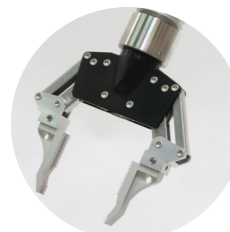
PMC 97 : strong and robust



Tongs adaptor available in $\varnothing 20$ or $\varnothing 19,05$

- MA 30*
- MA 11-80
- MT 120
- MT 200
- Terman

PEM 78 : lightweight and agile

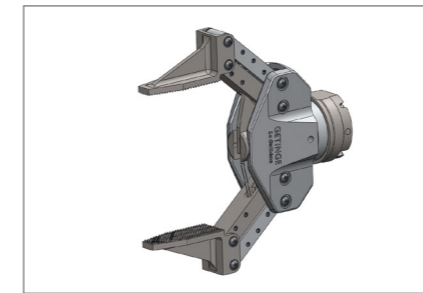


Tongs adaptor available in $\varnothing 19,05$

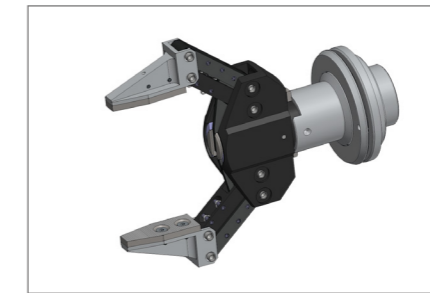
- MA 30
- MA 11-80
- MT 120**

* Tongs adaptable on this manipulator, if powerful tongs are requisite.
 ** Tongs adaptable on this manipulator, if lightweight tongs are requisite.

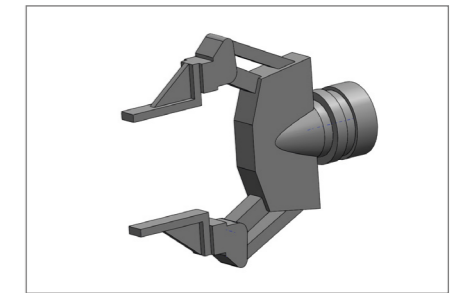
A complete range for all remote manipulation types



PGLC 2
 • Weight 560 g



PMC 97
 • Weight SST/aluminum version: 430 g
 • Weight titanium version: 600 g



PEM 78
 • Weight SST/aluminum version: 420 g
 • Weight titanium version: 590 g

Type of tongs	Tongs material	Tight intermediate piece	Tongs adaptor for use with booting	Tongs adaptor for use without booting	Disconnectable grippers option	Disconnectable grippers materials (other materials available according to customer requirements)	Parking fixture for tongs disconnection
PGLC 2	SST/Aluminum	Rotating***	23995C		Yes	SST	Yes, PMC Parking fixture
		Nonrotating			Yes	SST	
PMC 97	SST/Aluminum or Titanium	Rotating***	17162	17161C	Yes	SST	Yes, PEM Parking fixture
		Nonrotating			Yes	SST	
PEM 78	SST/Aluminum or Titanium	Rotating***	22468	-	Yes	SST	Yes, PEM Parking fixture
		Nonrotating			Yes	SST	

Tongs grippers

A range of tongs grippers is available, adaptable to requirements. Depending on the application, various materials are possible. The disconnectable tongs grippers can be changed inside the hot cell using a parking fixture.

Tongs extension

It is possible to extend the tongs/slave arm action field. There are two types of tongs extension:

- PMC 97 : removable extension, available in different lengths.
- PEM 78 : one-piece tongs extension.

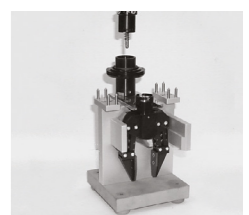
Parking fixture

Adapted to all types of tongs, the parking fixture enables the tongs to be disconnected from the outside of the hot cell. This tool can also disconnect tongs grippers (disconnectable in hot cell option). A specific parking fixture is required when using a tongs extension.

*** Rotating tight intermediate piece prevents the booting being twisted during tongs rotation.



Tongs PMC 97 with disconnectable grippers



Parking fixture for PMC 97 tongs